



medemagruppen



**NB!**

The latest versions of this user manual are available on our website:  
[www.medema.com](http://www.medema.com).

In special cases, for example, important new safety regulations or other significant messages regarding your vehicle, you will be contacted directly by your supplier.

## Contents

Contents .....	3
Symbols.....	4
Help for the visually impaired .....	4
Introduction.....	5
Warranty .....	5
Declaration of conformity .....	6
Preparation/adjustment .....	7
Introduction to the Ergo2 seat .....	9
Extra equipment – contents .....	15
Rear basket .....	16
Walking cane holder for back fitting.....	17
Lap belt.....	18
Inertia reel seat belt.....	20
Stealth headrest.....	22
Standard armrest.....	23
Alternative types of armrest .....	23
Adult armrest .....	24
Child/Junior armrest .....	25
Hemiplegia armrest .....	26
Amputated leg rest.....	27
Thigh rest .....	28
Stealth side rest.....	29
Electrical Seat front/back position.....	30
Electrical Back .....	31
Electrical Seat rotation.....	32
Electrical Seat hoist .....	33
Operating electrical functions.....	34
Seat post system.....	36
Complete seats .....	38
Complete seats with square shaft .....	38
Complete seats without headrest .....	38
Headrest Ergo2.....	38
Warning triangle. ....	38

## Symbols



Used in the user manual when a situation is described where there is a risk of personal injury, and therefore requires extra attention.



Used where the text is about electromagnetic compatibility (EMC).

## Help for the visually impaired

If you have difficulty reading small letters in the user manual, we recommend that you visit our website, where you can read this manual in PDF format. The PDF manual can be enlarged on your PC monitor as required.

Please contact us if you find it difficult to understand the manual or have general questions about the product. Our contact information is found on back pages of this user manual.

### Field Safety Notice (FSN)

All information concerning safety can be found at [www.medema.com](http://www.medema.com), which is always updated with the latest safety information. In the event of important safety-related changes, we will issue an alert (FSN) directly to our customers.

## Introduction

Thank you for purchasing the Ergo2 seat and/or Ergo2 accessories.

We have a wide range of accessories for the Ergo2 seat, which can be fitted to make your daily life easier. Contact us for more information about special accessories and adjustments.

The seat has been tested and approved by TÜV in accordance with EN 12184 for users weighing up to 175 kg, including biocompatibility testing of the armrests and cover. Flammability

tested in accordance with EN 1021-1 and EN 1021-2. Static, impact and fatigue strength in accordance with ISO 7176-8.

Medema A/S is not liable for any damage or personal injury caused by the unsuitable or unsafe use of the Ergo2 seat.

For more information about the use of the Ergo2 seat or this user manual, contact:

### **Medema A/S**

Tel.: +45 70 10 17 55

E-mail: [info@medema.com](mailto:info@medema.com)

Internet: [www.medema.dk](http://www.medema.dk)

NB We cannot be held responsible for any printing errors. We reserve the right to update this user manual as required.

## Warranty

Medema A/S provides a warranty in accordance with the Danish Sale of Goods Act.

## **CE Declaration of conformity**

Medema A/S hereby declares that:

Product: Ergo2 seat

Application: (prescribed application in the user manual)

Type no.: Ergo2

Type: Class C

is CE-marked in accordance with Directive 93/42/EEC of 14 June 1993 concerning medical devices.

The product is made in accordance with EN 12184 Electrically powered wheelchairs, scooters and their chargers.

The product has been risk assessed in accordance with DS/EN ISO 14971 Medical devices. Application of risk management to medical devices.



The seat can, for a fee, be delivered to the nearest dealer, who will then see to its disposal at all times in accordance with applicable environmental regulations.

Manufacturer: Medema A/S

Address: Enggårdvej 7, 7400 Herning, Denmark

Tel./Fax +45 7010 2054 +45 9716 8582

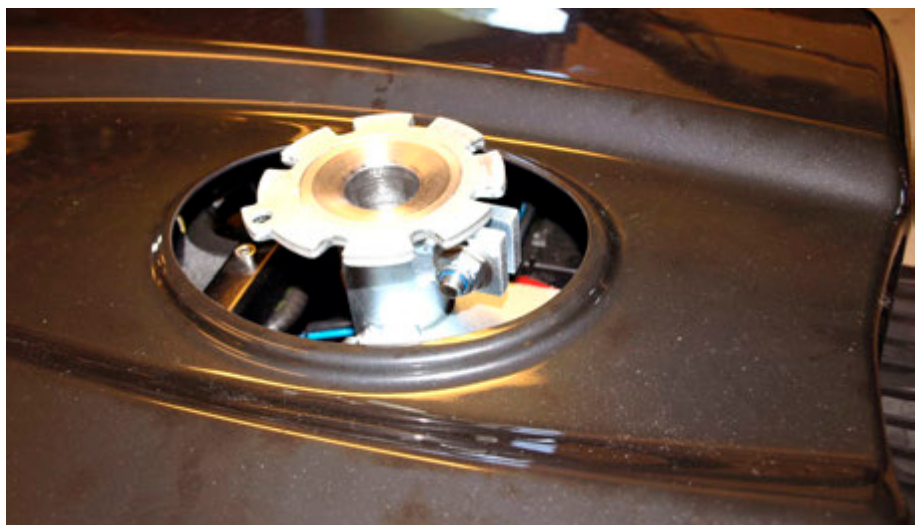
Date: 1 March 2015 Signature: \_\_\_\_\_

## Preparation/adjustment

### Seat height adjustment

Loosen the lever for rotating the seat, and turn the seat slightly to the side. Remove the seat by lifting.

The seat is very heavy. When lifting the seat, ensure you have the proper lifting posture with your back. A standard seat (45 cm), weighs 27 kg (see below).





*Unscrew the contra screw.  
Use the combination spanner, 17 mm.*



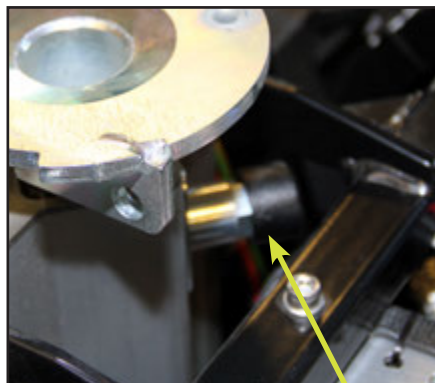
*Unscrew the bolt.*



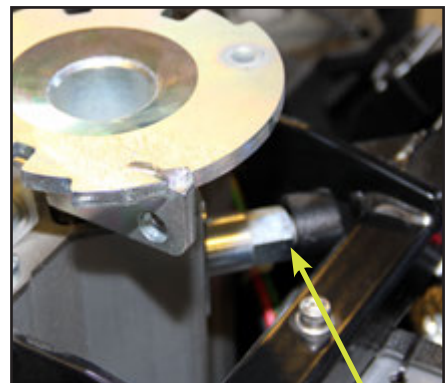
*Adjust the seat post height to the desired position.  
The seat post is marked with a ring for each centimetre.*

*Tighten the bolt (50 Nm) and then tighten the contra nut (50 Nm).  
Fit the seat. Adjust alignment if necessary.*

### **Seat post height regulation using position bolt (optional)**



*Seat release pressed in. Press  
the seat release to release the seat  
fitting.*



*Seat release pressed out. You can now  
raise/lower the seat fitting to the required  
height. Press in the seat releaser so that  
it engages  
with one of the five holes in the seat  
fitting.*



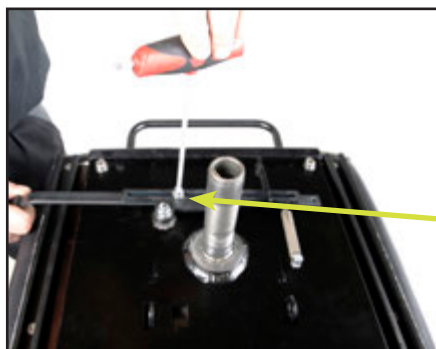
## Introduction to the Ergo2 seat



### Lever for rotating the seat

The lever must be pulled back to rotate the seat. The seat can then be rotated to each side, locking at each 45°.

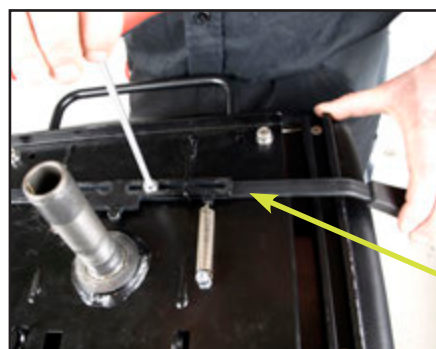
The lever is spring-loaded, and the seat is locked automatically when the lever is released. This lever is located on the right side as standard, but can also be positioned on the left side. When the lever is located on the left side, it must be pushed forward in order to rotate the seat instead of pulling back.



### Out/in adjustment of lever for rotating the seat

Lift the seat off the vehicle.

Loosen the two Allen screws. The lever can now be adjusted out/in to the desired position.



### Left positioning of lever for rotating the seat

Remove the two Allen screws and pull the lever out.

Move the lever in from the left side and tighten the Allen screws.

When installing the lever on the left side, the lever must be moved forward to rotate the seat.



### Mount the seat again

To ensure that the seat is fully in position, release the lever for rotating the seat, to get the seat all the way down:



#### **Seat forward/back lever**

Pull the lever up to release the seat on the slide rail.

The seat can now be moved forward or backward as

required, with 200 mm of travel.

When the lever is released, the seat will automatically lock into place in the closest stop position.



#### **Armrest height adjustment**

Open the zipper on the backrest side and back.



Unscrew the Allen screw and the armrest can be pushed up or down as needed. It can be adjusted by 140 mm.



#### **Width adjustment of armrest**

Each armrest can be adjusted 25 mm out.

Loosen the Allen screw and adjust the armrest sideways.



### **Armrests angle adjustment**

The armrest can be adjusted 60° by using the adjustment screw.

The armrest can be tilted up to facilitate entry and exit.



### **Backrest angle adjustment**

The backrest can be adjusted 45° backward and 90° forward. To adjust, pull the lever on the right side of the seat.



The backrest angle adjustment handle is fitted pointing down as standard. This is because it can collide with the armrests if these are set to the lowest position.

If there is no need for this and it is preferable for the handle to be in a more horizontal position, remove the centre cover on the handle using a flat screwdriver.



Grip the square shaft and turn up 90° and fit then refit the handle and cover.



The handle for adjusting the backrest is shown here turned 90° up.



Backrest reclined at 45° angle.



Backrest inclined forward to 90° angle.

This means that the seat does not necessarily need to be removed during transport, e.g. in a car.



### **Backrest forward/back**

Loosen the specified screws in both sides. 13 mm head.



The seat depth can now be adjusted by sliding the backrest forward or back.

Shown here with 320 mm seat depth

The backrest can be moved backward or forward to the edge of the rail. Tighten the screws after adjusting seat depth.



Shown here with 550 mm seat depth



### Headrest height adjustment

Press the button in and lower/raise the headrest as required.



### Headrest forward/backward adjustment

The headrest can be tilted forward and backward as needed.

## Extra equipment – contents

Rear basket .....	16
Walking cane holder for back fitting .....	17
Lap belt.....	18
Inertia reel seat belt.....	20
Stealth headrest.....	22
Standard armrest.....	23
Alternative types of armrest.....	23
Adult armrest .....	24
Child/Junior armrest .....	25
Hemiplegia armrest .....	26
Amputated leg rest.....	27
Thigh rest .....	28
Stealth side rest.....	29
Electrical Seat front/back position.....	30
Electrical Back.....	31
Electrical Seat rotation.....	32
Electrical Seat hoist .....	33
Operating electrical functions.....	34
Seat post system .....	36
Complete seats .....	38
Complete seats with square shaft .....	38
Complete seats without headrest .....	38
Headrest Ergo2.....	38
Warning triangle .....	38



## Rear basket



### Fitting basket on the seat (extra equipment)

Complete mounting kit for basket.

Two brackets and four Allen screws. 4 mm head.



Unzip the zip fastener and position the bracket next to the two pre-drilled holes.



Fit the basket on the bracket and now it is ready for use.

Remember to insert a locking split after fitting.

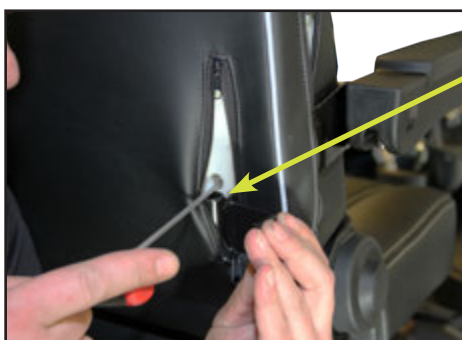
Part number	M-127-06-165
Max. load in basket	15 kg



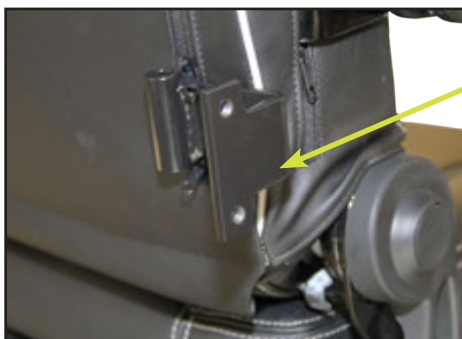
## Walking cane holder for back fitting



Walking cane holder, complete set.



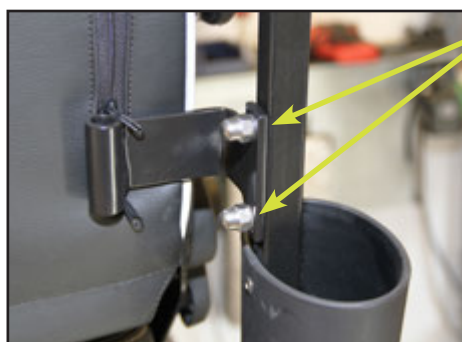
Zip the zip fastener and securely fit the bracket using two screws. 4 mm head.



Bracket fitted.



Secure the walking cane holder using two screws. 6 mm head.



Tighten nuts securely on the two screws.  
13 mm head.



The walking cane holder is now fully fitted.

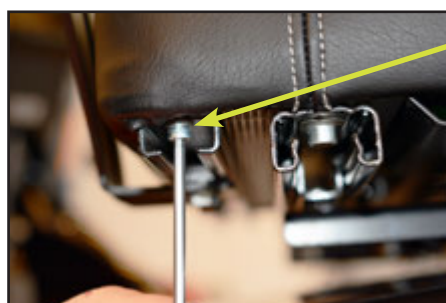
NB: May also be fitted on the left side of the seat, by using the mirror-image bracket.

Part number	M-127-06-003
Max. weight.	Two walking canes/crutches

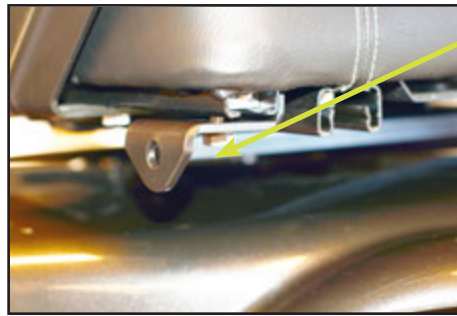
## Lap belt



Complete lap belt set



Remove the stop screw in the rail.  
4 mm head.



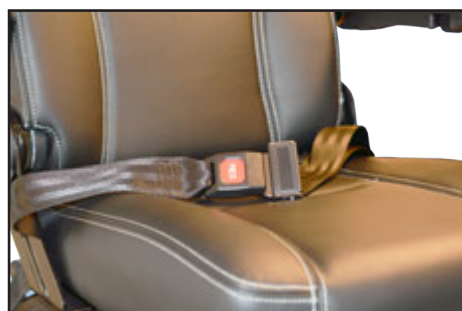
Slide in assembly fitting.  
Re-fit the stop screw. Push the bracket back against the stop screw and tighten securely.  
13 mm head.  
Do this on both sides of the seat.



One end of the seat belt is attached to the bracket.  
Allen screw 6 mm head.  
Nut 17 mm head.



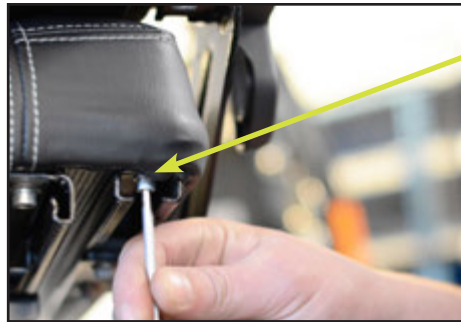
The other end of the seat belt is attached in the same way, on the opposite side of the seat.



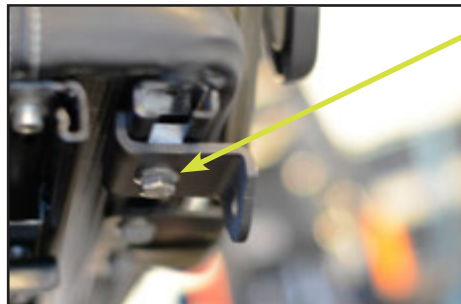
The lap belt is a safety belt and functions in the same way as a seat belt in a car.

Part number	M-127-06-144
Max. weight.	250 kg user weight

## Inertia reel seat belt



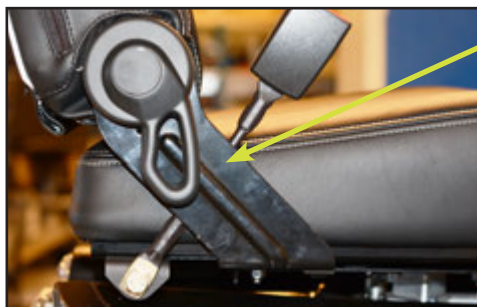
Remove the stop screw in the rail.  
4 mm head.



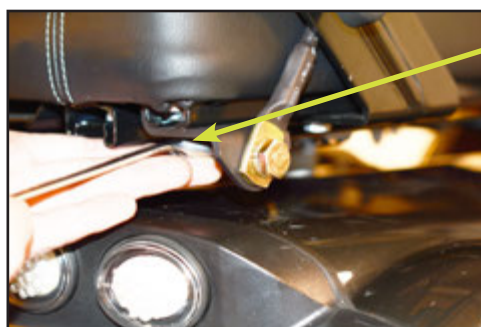
Slide in assembly fitting. Re-fit the stop screw. Push the bracket back against the stop screw and tighten securely.  
13 mm head.



Screw the seat lock securely to the assembly fitting.



Place the inertia reel seat belt between the seat and the back bracket.

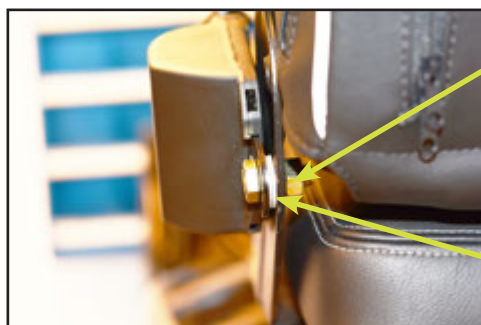


Re-tighten the stop screw.

The seat belt lock is now fully fitted.



Hole for fitting the inertia reel seat belt.



Securely screw the inertia reel seat belt in the hole on the back fitting.  
13 mm head.

Intermediate washer.



Fully-fitted inertia reel seat belt.

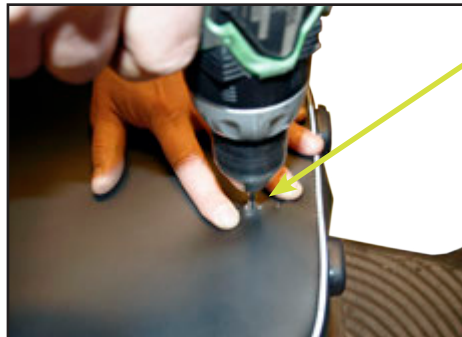
Part number	M-127-07-161
Max. weight.	250 kg user weight



## Stealth headrest



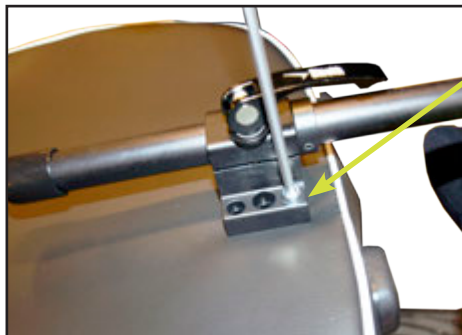
Stealth headrest



There are two pre-drilled holes in the back for fitting the headrest (below the cover).



Using a pointed tool, feel where the holes are – they can be felt through the cover – and drill carefully through the cover.



The headrest bracket is secured screwed using the four holes.



The headrest is now fully fitted.

The articulated bar's angle can be adjusted and the headrest height can be adjusted.

Headrest Stealth Comfort, Adult	CR-01396
Headrest Stealth Comfort, Junior	CR-01397

## Standard armrest



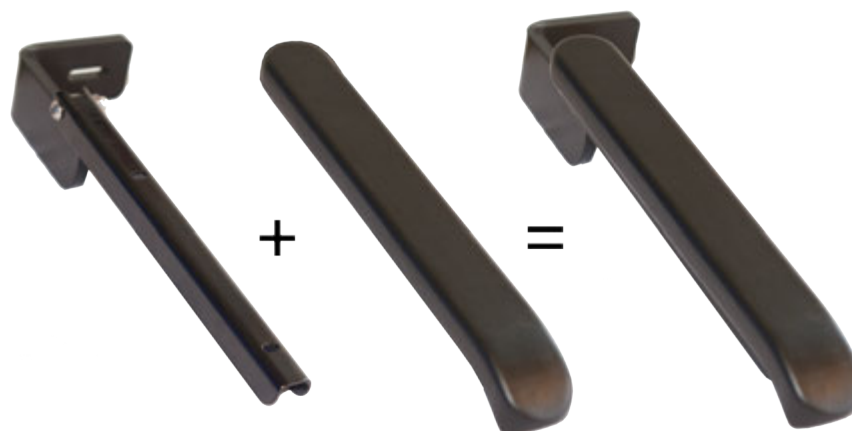
Left armrest	M-127-07-121
Right armrest	M-127-07-120

## Alternative types of armrest

If a non-standard armrest is required, several options are available.

See options on next page.

## Adult armrest



Armrest holder, adult, Ergo2, L.	M-127-07-169
Armrest holder, adult, Ergo2, R.	M-127-07-170
Armrest cushion, MC Ergo standard adult	SR-01633



Armrest holder, adult, Ergo2, L.	M-127-07-169
Armrest holder, adult, Ergo2, R.	M-127-07-170
Armrest cushion, leather cover - 70 x 300 mm R.	CR-00190
Armrest cushion, leather cover - 70 x 300 mm L.	CR-00317
Armrest cushion, leather cover - 100 x 350 mm R.	CR-00777
Armrest cushion, leather cover - 100 x 350 mm L.	CR-00778
Armrest cushion, leather cover - 70 x 400 mm R.	CR-00783
Armrest cushion, leather cover - 70 x 400 mm L.	CR-00784
Armrest cushion, leather cover - 70 x 350 mm R.	CR-00787
Armrest cushion, leather cover - 70 x 350 mm L.	CR-00788



## Child/Junior armrest



Armrest holder, child, Ergo2, L.	M-127-07-171
Armrest holder, child, Ergo2, R.	M-127-07-172
Armrest cushion, MC Ergo standard child	SR-01635

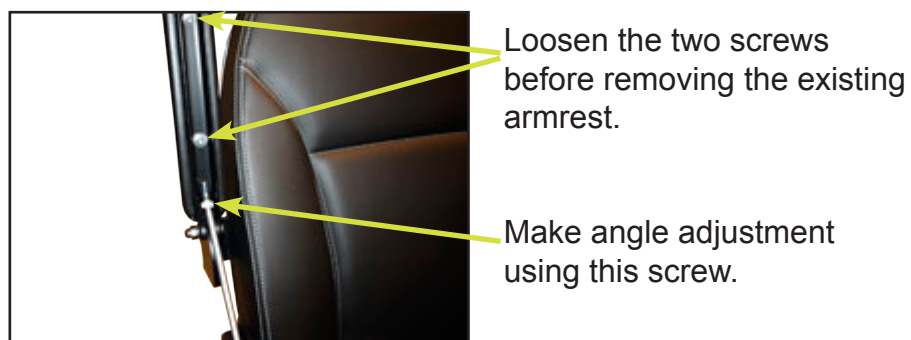


Armrest holder, child, Ergo2, L.	M-127-07-171
Armrest holder, child, Ergo2, R.	M-127-07-172
Armrest cushion, MC Ergo standard child	SR-01635
Armrest cushion, child, leather cover - 70 x 210 mm R.	CR-00775
Armrest cushion, child, leather cover - 70 x 210mm L.	CR-00776
Armrest cushion, child, leather cover - 70 x 260 mm R.	CR-01341
Armrest cushion, child, leather cover - 70 x 260 mm R.	CR-01342

## Hemiplegia armrest



Armrest holder, adult, Ergo2, L.	M-127-07-169
Armrest holder, adult, Ergo2, R.	M-127-07-170
Arm rest, Hemiplegia, right or left side	SR-01638



## Amputated leg rest



Amputated leg rest



The rail for the amputated leg rest is screwed securely using two screws in the rail below the seat.



Fully-fitted amputated leg rest.

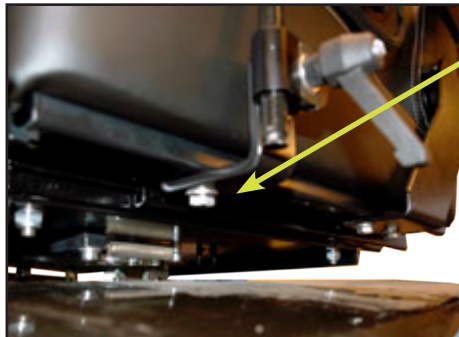
NB: Can be fitted as mirror-image on opposite side.

Part number	M-127-07-162
Max. load	25 kg

## Thigh rest



Thigh rest



Fit the thigh rest using a nut in the rail below the seat.



Adjust the thigh rest height, in/out position and angle to suit the user.

NB: Can be fitted as mirror-image on opposite side.

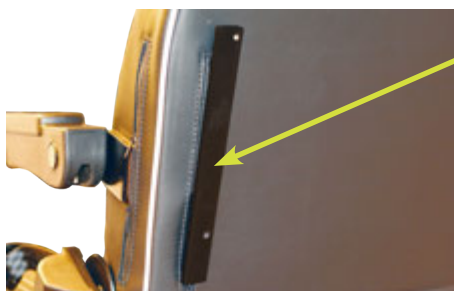
Part number	CR-03074
Max. load	20 kg

## Stealth side rest

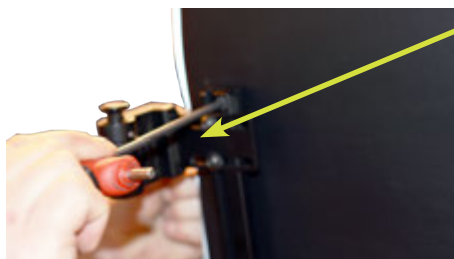


Side rest for fitting to backrest.

Stealth swivelling side rest, child 9 x 9, right	CR-01382
Stealth swivelling side rest, child 9 x 9, left	CR-01383
Stealth swivelling side rest, adult 13 x 18, right	CR-01384
Stealth swivelling side rest, adult 13 x 18, left	CR-01385
Stealth swivelling side rest, junior 11 x 15, right	CR-01386
Stealth swivelling side rest, junior 11 x 15, left	CR-01387
Link for Stealth side rest - large	CR-01388
Bracket for Stealth seat side rest	SR-05946



Fit the assembly rail to the backrest.



Attach the side rest fitting on the assembly rail.



Fully-fitted side rest.

Part number	CR-01384 + CR-01385 (R + L, respectively)
Max. load	20 kg

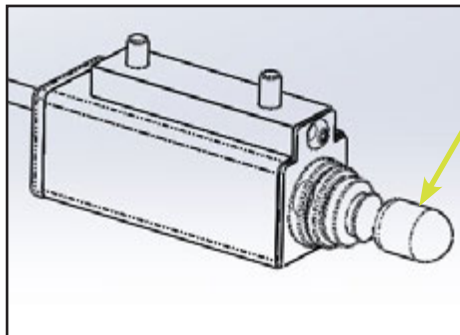
## Electrical Seat front/back position



Seat in outer front position.



Seat in outer back position.  
(Can be adjusted 15 cm)



Electrical switch to move seat backward/forward.

NB:  
See section "Operating electrical functions".

Part number	M-127-07-159
User weight	175 kg

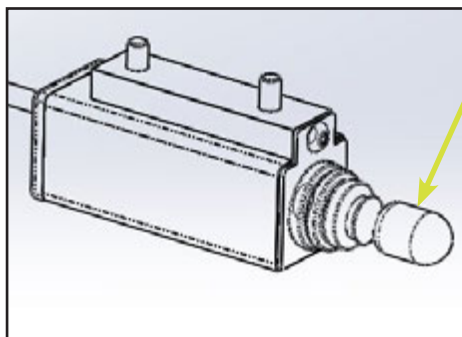
## Electrical Back



Backrest fully reclined.



Backrest fully inclined forward.  
Can be adjusted 15 cm.



Electrical switch to incline/  
recline backrest.

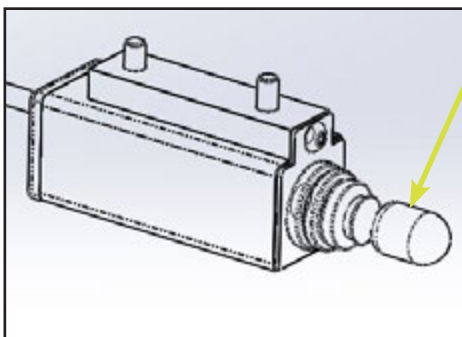
NB:  
See section "Operating  
electrical functions".

Part number	M-127-07-158
User weight	175 kg

## Electrical Seat rotation



The seat can rotate 90 degrees, to one side or the other.



Electrical switch to rotate seat.

NB:  
See section "Operating electrical functions".

Part number	M-127-07-160
User weight	175 kg

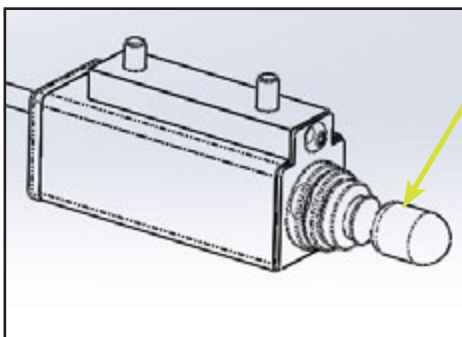
Technical data	M-Model w / seat rotation
<b>Seats:</b>	
Ergo2	48 cm
Effective seat depth: Ergo2	48 cm
Seatcushion angle	7°
Seat back height: Ergo2	53 cm
Height: front edge of seat to road. Ergo2 seat w / slide	66,5 - 76,5 cm
Height: footplate to front edge of seat. Ergo2 seat w / slide	47,5 - 57,5 cm
The backrest angle: Ergo2	Ca. +5° til +30°



## Electrical Seat hoist



The seat can be raised by 15 cm.  
However, the scooter goes down at half speed at heights above 8 cm.



Electrical switch to raise seat.

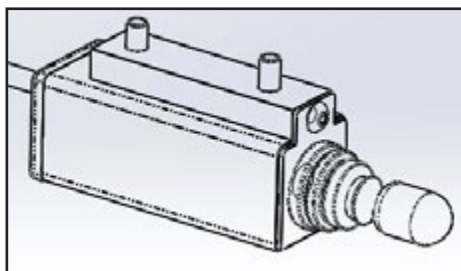
NB:  
See section "Operating electrical functions".

Part number	M-127-02-051 (New vehicle)
Part number	M-127-02-587 (After mounting)
User weight	175 kg

Technical data	M-Model
<b>Seats:</b>	
Ergo2	48 cm
Effective seat depth: Ergo2	48 cm
Seatcushion angle	7°
Seat back height: Ergo2	53 cm
Height: front edge of seat to road. Ergo2 seat w / slide	64 - 74 cm
Height: footplate to front edge of seat. Ergo2 seat w / slide	45 - 55 cm
The backrest angle: Ergo2	Ca. +5° til +30°

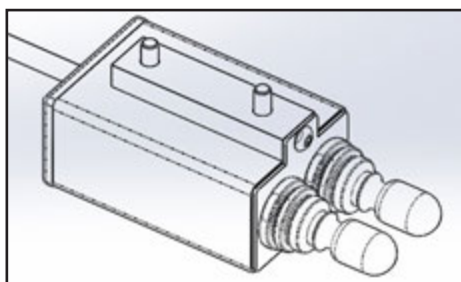
## Operating electrical functions

All of the electrical functions are fitted as standard equipment with a control unit for single function. If two electrical functions are chosen, a unit is fitted under each armrest. If three or four electrical functions are desired, one or two double control units must be purchased. If the user wants to operate two electrical functions from the same armrest, a double control unit must also be purchased.



Unit for a single electrical function.

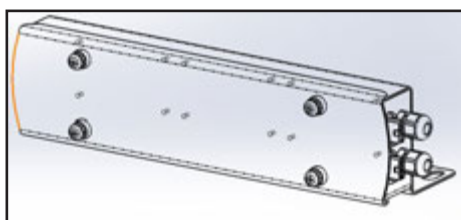
M-127-02-576



Unit for two electrical functions.

M-127-02-052

Electrical seat hoist and electrical seat rotation, stop in the end positions via switches. Electrical backrest and electrical seat front/back position stop via power limiting. To control this, a PCB must be used, which is fitted in a unit. The unit can house up to three PCBs. Therefore, if an electrical backrest or electrical seat with front/back position been chosen, the following must be purchased:



Unit for a Concens' PCB.

M-127-02-585



Basis actuator controller C2-10.

SR-05893 (one per electrical function)

NB:

If electrical functions are chosen for an M-Joy, the electrical functions are controlled as standard using the joystick, so there is no need for control units, housing for the PCB or PCB, since the entire system is controlled via the joystick.

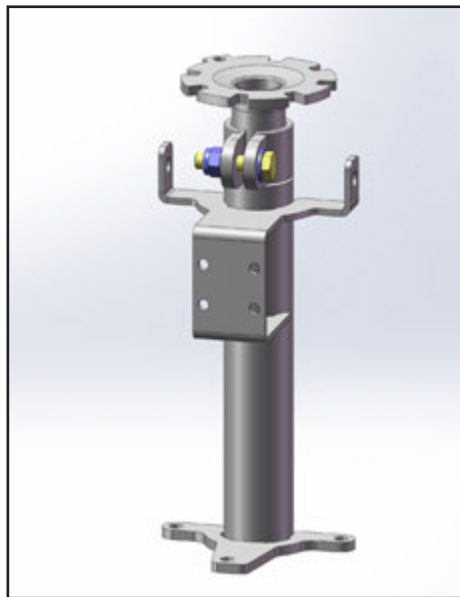
## Seat weight



Seat model	Weight
Ergo2 seat 40 cm	26 kg
Ergo2 seat 45 cm	27 kg
Ergo2 seat 50 cm	29 kg

## Seat post system

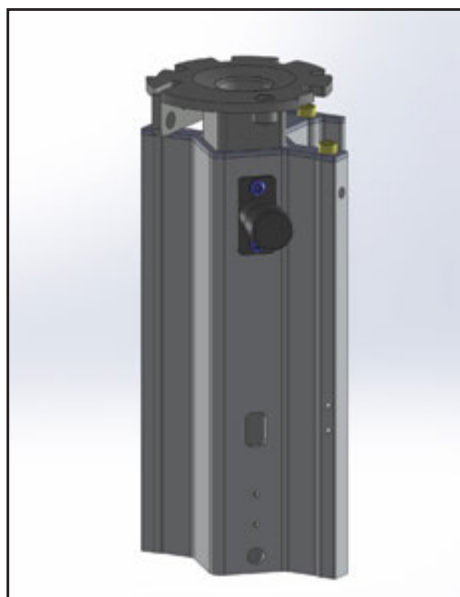
As standard, the Ergo2 seat system is equipped with a height-adjustable seat post, which requires a tool to adjust. When it is tightened, it is completely fixed.



Seat post - fixed.

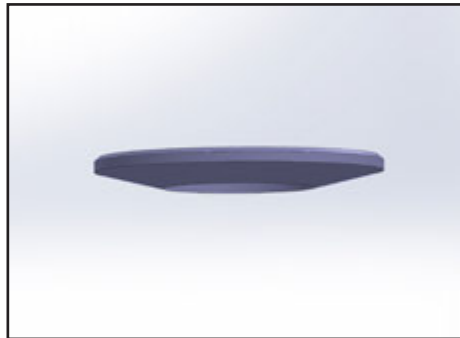
M-127-02-012

Alternatively, the seat post can be supplied with a positioning bolt solution.



Seat post with positioning bolt.

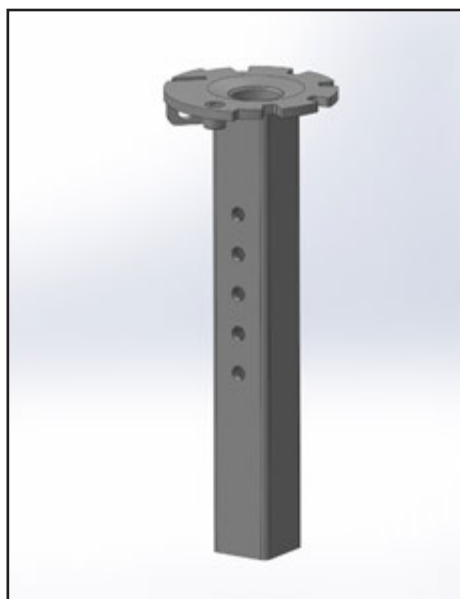
M-127-02-049



Plastic washer.

M-127-7-234

(converting from Ergo2 to Ergo1/Eblo)



Loose seat post square.

M-127-2-562.



Loose seat post for T model.

M-127-2-588.

## Complete seats

SEAT MC ERGO2 40 CM, COMPLETE	M-127-07-152
SEAT MC ERGO2 45 CM, COMPLETE	M-127-07-153
SEAT MC ERGO2 50 CM, COMPLETE	M-127-07-154

## Complete seats with square shaft

SEAT MC ERGO2 40 CM, COMPLETE WITH SQUARE SHAFT	M-127-07-152F
SEAT MC ERGO2 45 CM, COMPLETE WITH SQUARE SHAFT	M-127-07-153F
SEAT MC ERGO2 50 CM, COMPLETE WITH SQUARE SHAFT	M-127-07-154F

## Complete seats without headrest

SEAT MC ERGO2 40 CM, COMPLETE (WITHOUT HEADREST)	M-127-07-152N
SEAT MC ERGO2 45 CM, COMPLETE (WITHOUT HEADREST)	M-127-07-153N
SEAT MC ERGO2 50 CM, COMPLETE (WITHOUT HEADREST)	M-127-07-154N

## Headrest Ergo2

HEADREST, ERGO2	M-127-7-200
-----------------	-------------

## Warning triangle.

Warning triangle	M-127-06-973
------------------	--------------



**medema**gruppen